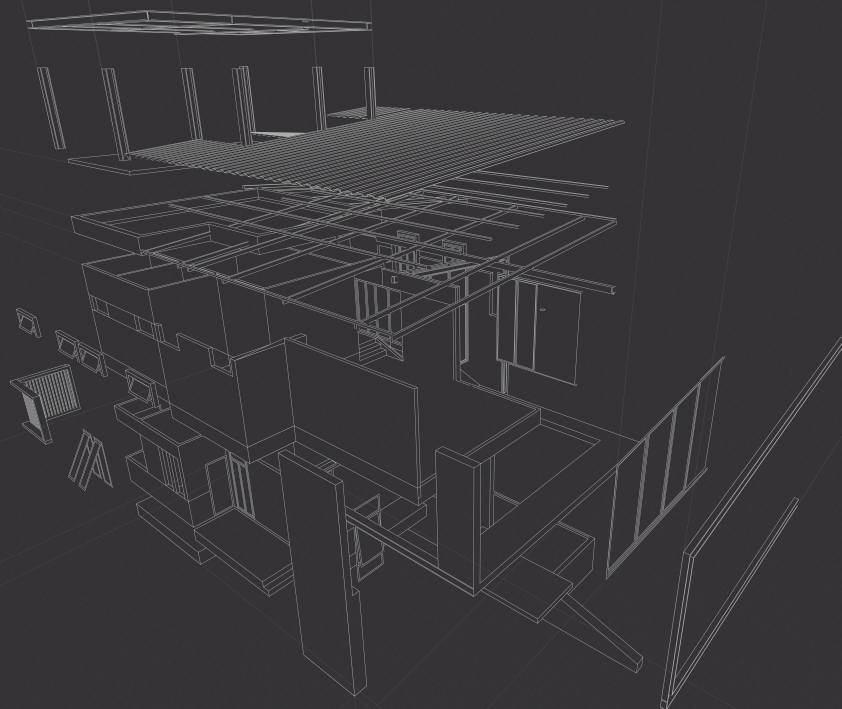


iHomeBOX

The Tailor



digitalcatalogue



The image shows a high-end residential project in a lush, hilly landscape. The houses are modern, white, and box-like with large glass windows and doors. Each house has a private swimming pool and a covered outdoor seating area. The houses are arranged in a row, with each house having its own pool and garden. The landscape is filled with green trees and manicured hedges. In the foreground, there is a large swimming pool and a covered outdoor seating area with a large umbrella. The overall atmosphere is one of luxury and modern living in a natural setting.

HomeBOX

Project activities in Kaş - Kalkan Region are carried out by our company.



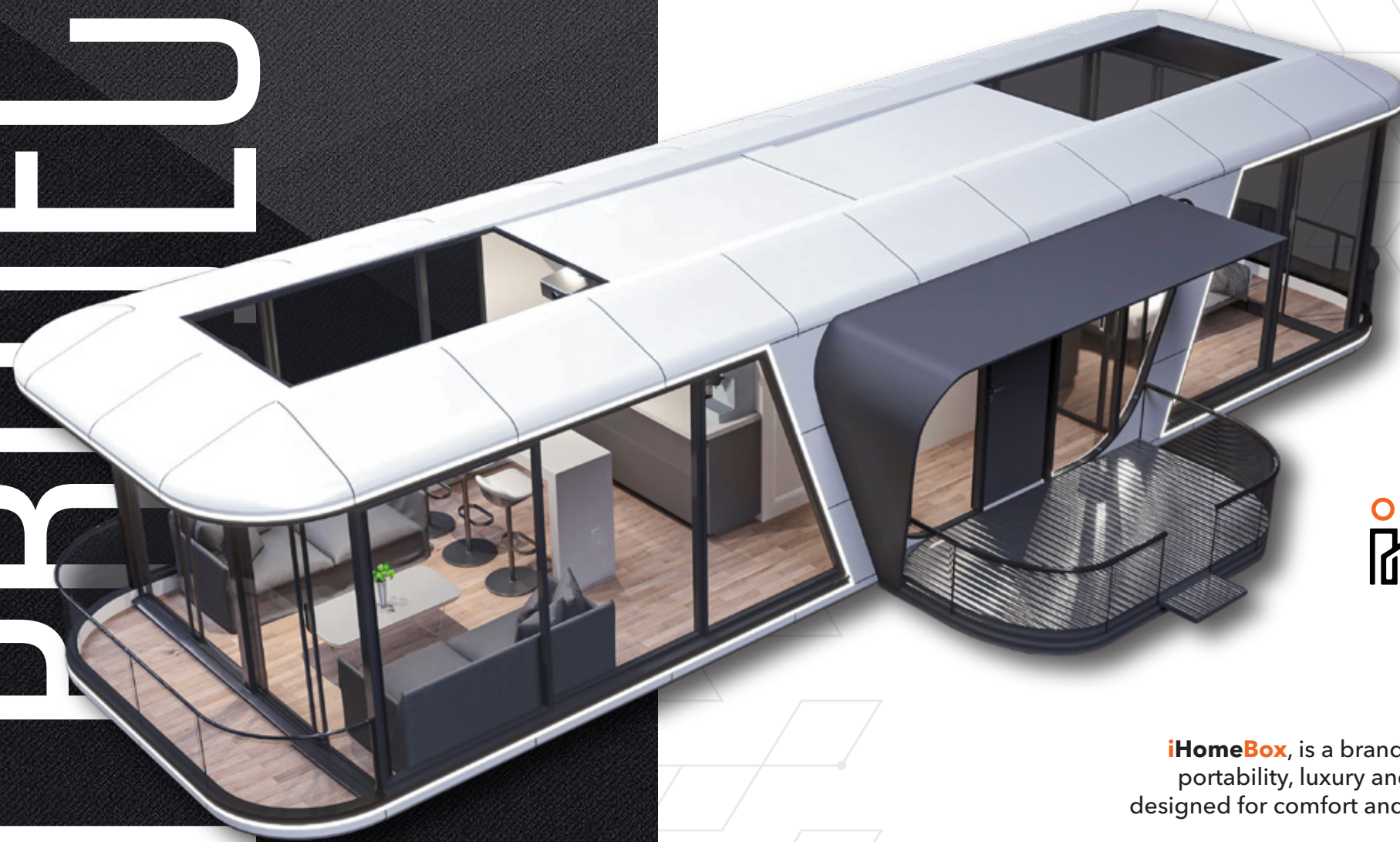
Project activities in Kaş - Kalkan Region are carried out by our company.

inhomeBOX

mion

ABOUT THE PRODUCT

ihomebox



The Tailor
iHomeBOX

iHomeBox, is a brand of smart mobile home that combines portability, luxury and modernity. These special houses are designed for comfort and practicality and you can go wherever you want depending on your needs.

The **iHomeBox** is equipped with carefully thought-out premium materials for maximum comfort and efficiency in the interior. You can customise your living space according to your needs due to its modular design.

iHomeBox, integrated with smart home technologies, allows you one-touch control of your home's lights, temperature, security systems and more. Whether you need a getaway out of town or a home while travelling, **iHomeBox** travels with you.

Its mobility allows you to travel freely and live wherever you want. Each **iHomeBox** is designed with sustainability and energy efficiency in mind. With solar panel options and energy efficient appliances, you will not compromise on your comfort while reducing your impact on the environment.

SMART BOX

ihome**box**



iHome box
Models
Dimensions
Material and Structure
Glass Systems
Electrical System and Other
Security and Access
Energy Efficiency
Price Options

HomeBOX aspendos



01

Bring a new aspect to your life with this innovative and flexible living space that offers solutions tailored to your needs.

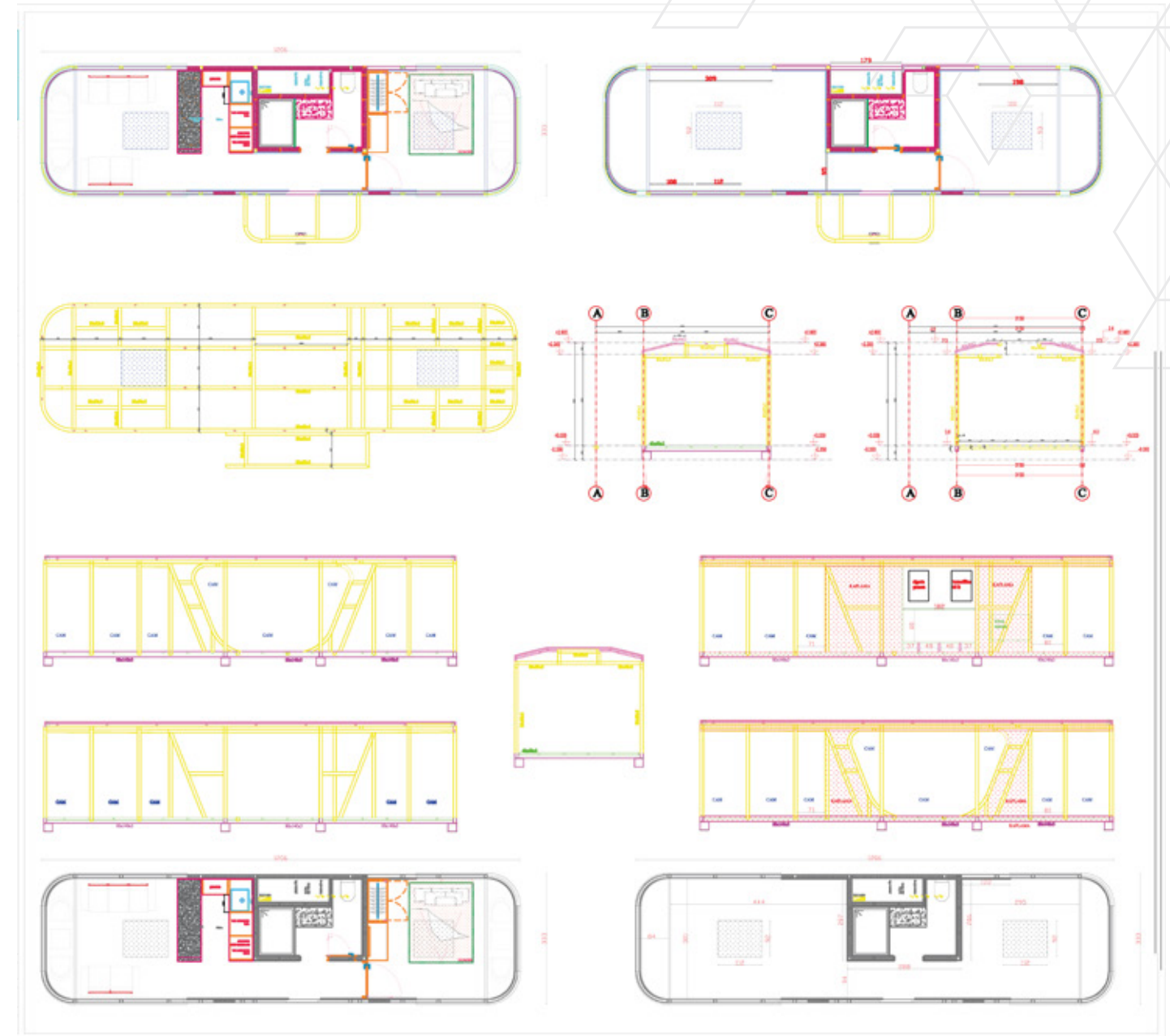
02



technical specifications

aspendos

- Total Area** : 40 m²
- Length** : 12 m
- Width** : 3.3 m
- Height** : 3.2 m
- Body Framework** : Main body was formed by using 3500 kg iron profile.



Siding : 10 mm OSB is covered with membrane-coated waterproofing material and covered with Albond B1 class brand aluminium composite coating. IHomeBox's ceiling, walls and coverings are made of 9 mm birch Plywood and vibrating screed using the puzzle method and completed with velcro system and wood lacquer coating.

Interior lining: For the insulation of the mobile home related to heat and cold, ceiling, floor, side walls, used Eartwool 043 Alu100mm and Izocam roof mattress, aluminium coated Type 400/C201-0010.

Floor: Waterproof 18mm Birch plywood covered with 8 mm laminate parquet.

HomeBOX
olympos



05

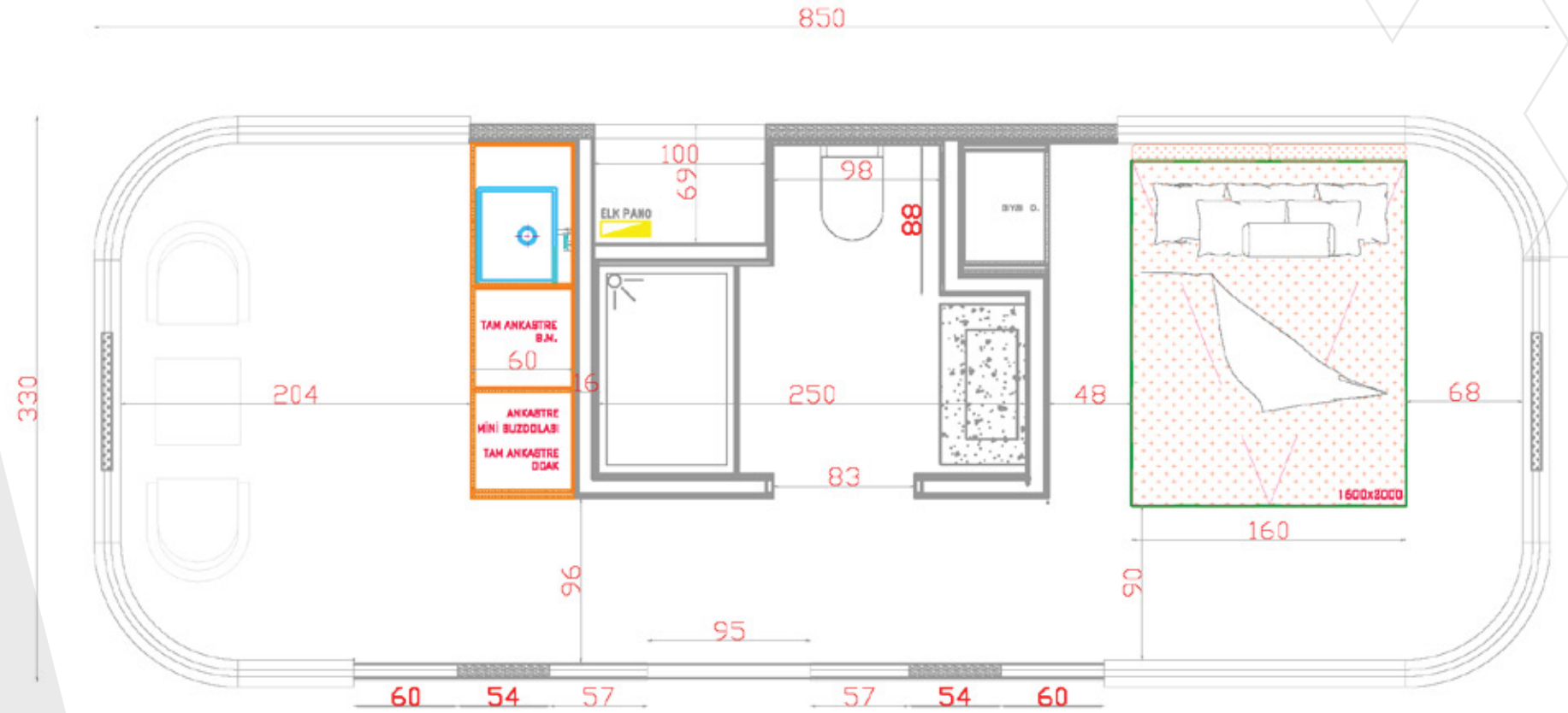
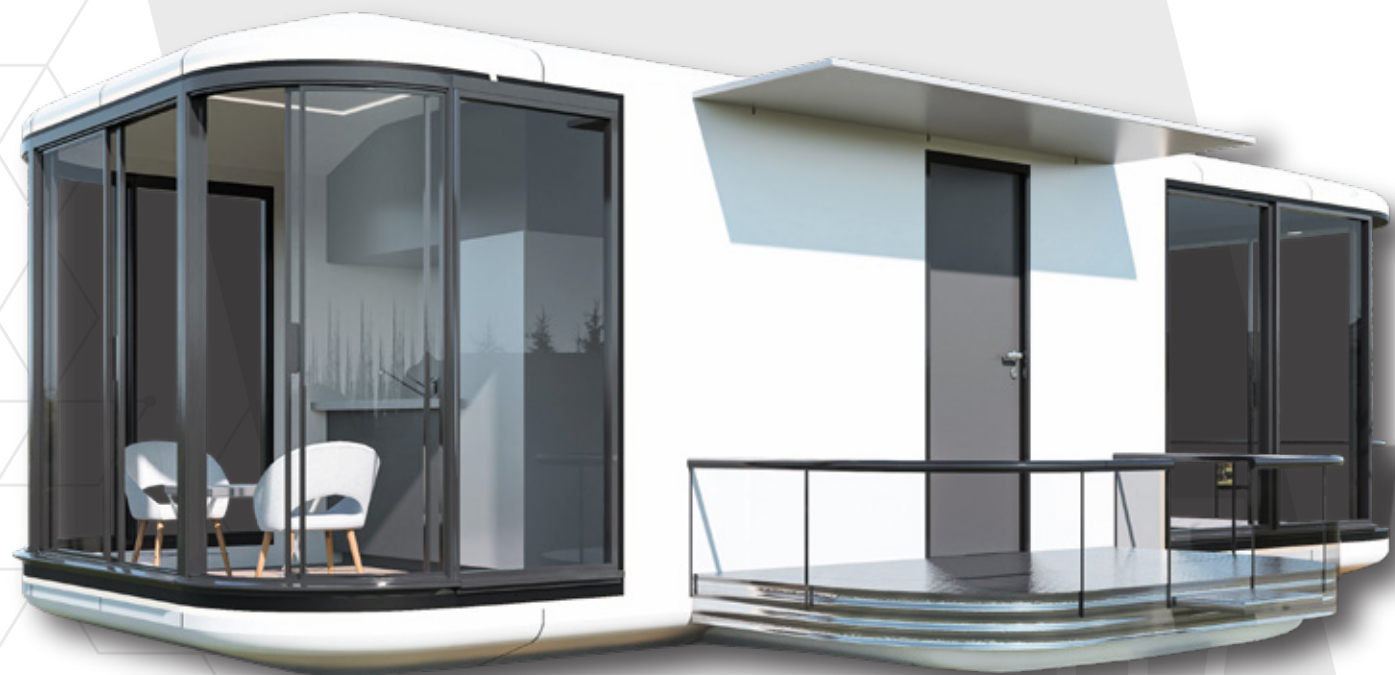
06



technical specifications

olympos

- Total Area** : 28,5 m²
Length : 8,5 m
Width : 2,5 m
Height : 3.2 m
Body Framework : Main body was formed by using 3500 kg iron profile.



Siding : 10 mm OSB is covered with membrane-coated waterproofing material and covered with Albond B1 class brand aluminium composite coating. IHomeBox's ceiling, walls and coverings are made of 9 mm birch Plywood and vibrating screed using the puzzle method and completed with velcro system and wood lacquer coating.

Interior lining: For the insulation of the mobile home related to heat and cold, ceiling, floor, side walls, used Eartwool 043 Alu100mm and Izocam roof mattress, aluminium coated Type 400/C201-0010.

Floor: Waterproof 18mm Birch plywood covered with 8 mm laminate parquet.

iHomeBOX
likya



09

iHomeBox, a modern, portable and smart lifestyle.
Go wherever you want to take your home.

10





glazing systems

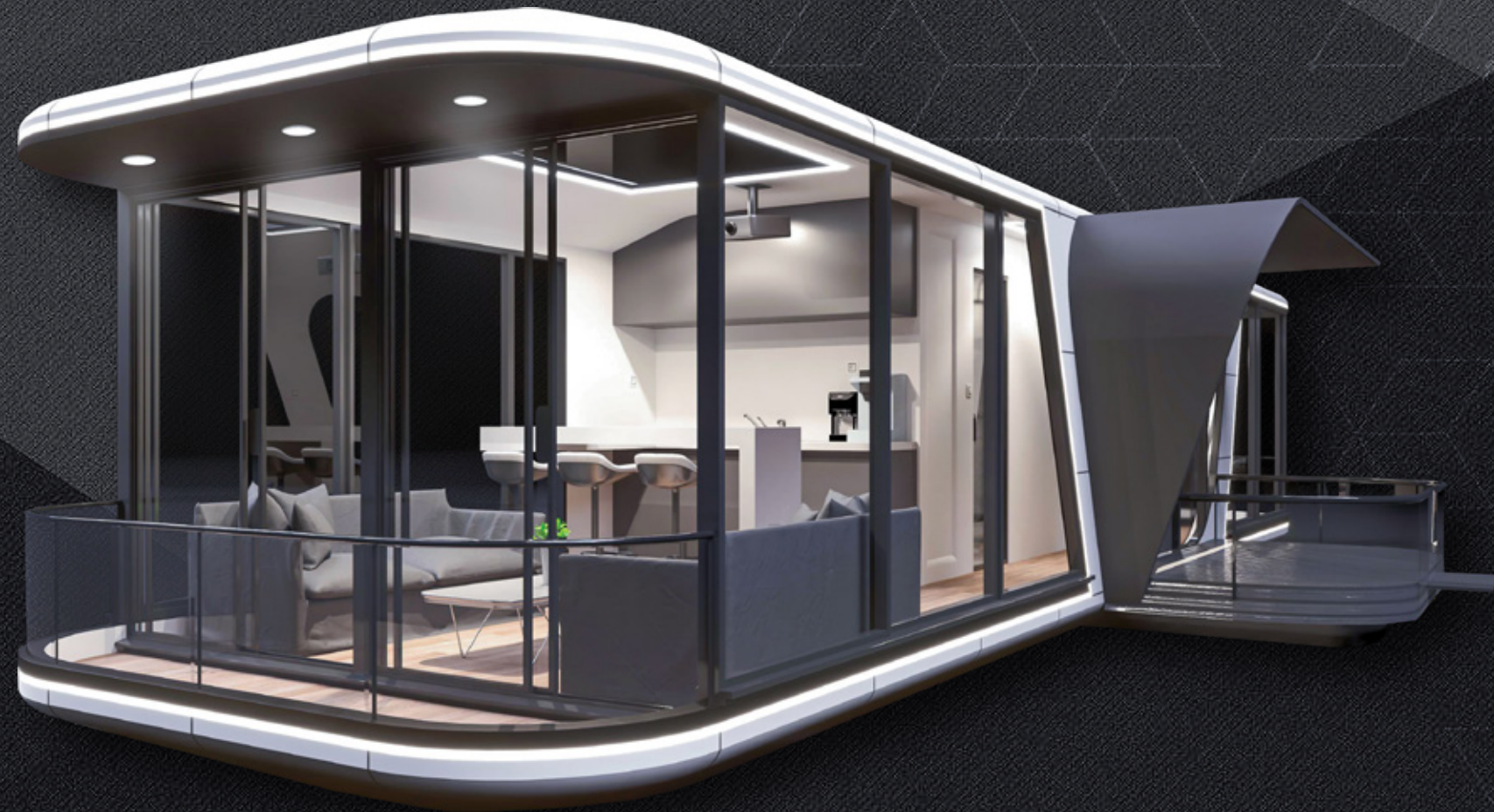
- ⊕ All windows are made from Comfor and 4 mm+12HB+4 mm/C thermo glass.
- ⊕ The balcony glazing is made from 6mm toughened laminated glass.
- ⊕ Roof glazing 6 mm 50/33 Solar-lowe toughened+12HB + (4 mm+4 mm laminated glass).
- ⊕ Window frames are Albond RWT55 system insulated and roof window frames are R50 system black matt aluminium.
- ⊕ It has protection against UV rays.
- ⊕ Regulates the temperature by refracting 30% of the sun rays coming from outside.
- ⊕ Windows do not create a greenhouse effect and do not sweat.
- ⊕ There is no image shift in the oval glasses at the front and rear corners.





security access

- ⊕ The exterior door of the home can be opened and locked with a card and lock system.
- ⊕ Underneath the houses, there are 8 feet on the ground, thus eliminating the need to pour Floor concrete.



15

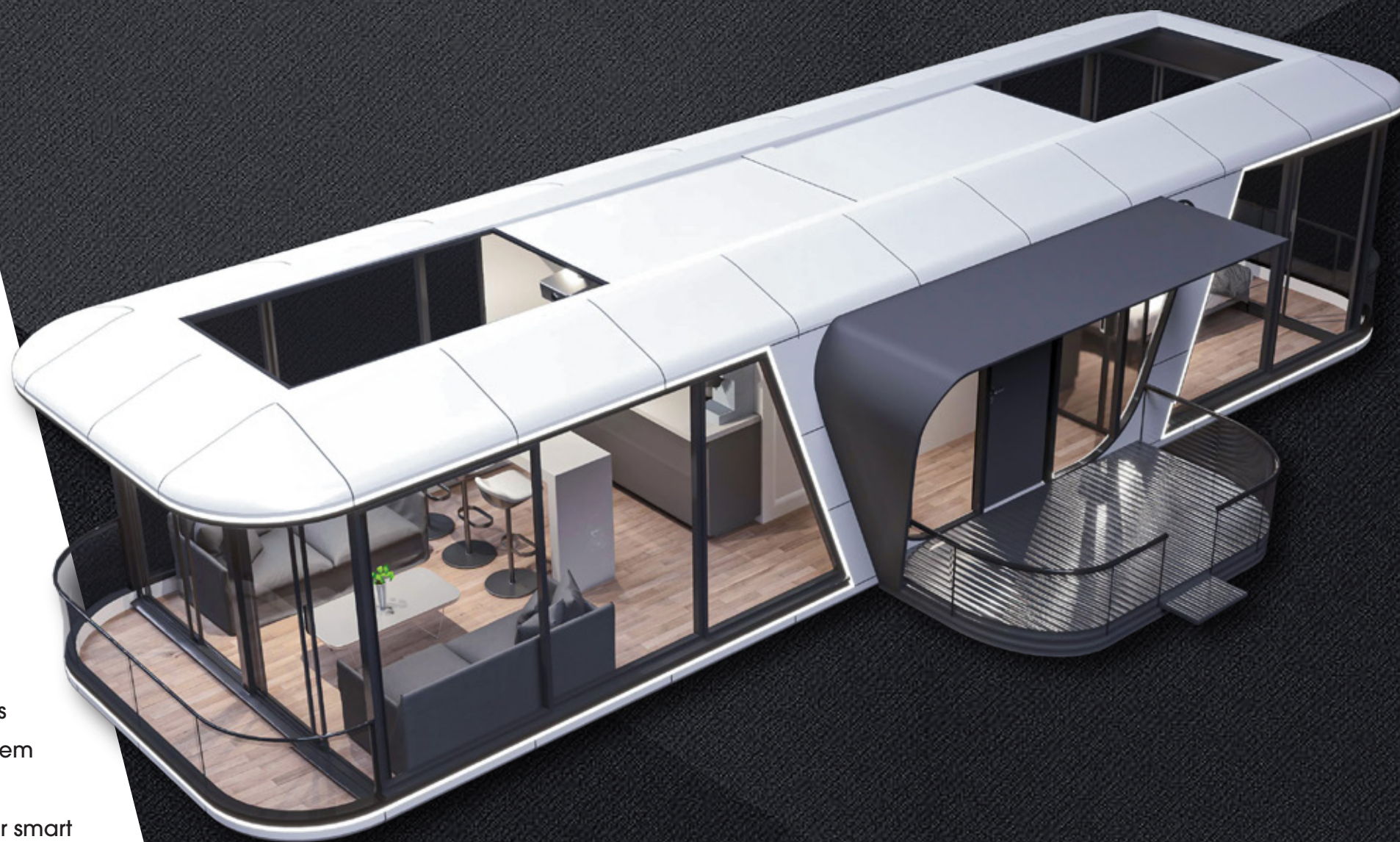
16





electrical system

- ⊕ All electrical system is made of Halogen Free cables that do not transmit flame during the fire.
- ⊕ Ceiling cable transports are carried with dipped galvanised tray.
- ⊕ All electrical system is designed to be integrated with smart system and solar panel.
- ⊕ In the main fuse board used Siemens brand products which are designed in accordance with the smart system and solar panel.
- ⊕ Curtains work compatible with Somfy brand motor smart system.
- ⊕ Our mobile home has an electronic panel, smart home system, air conditioning outdoor unit, thermosiphon, inlet and outlet of clean and waste water installation and a technical room with aluminium grid protection for intervention.



- ⊕ In the WC and bathroom, applied ceramic tiles according to the wet volume and used 1 ECA brand with a recessed tank.
- ⊕ In the bathroom there is 1 shower cabin and Hilton washbasin.
- ⊕ Interior and exterior lighting is provided with LED and Spot lights.
- ⊕ For the TV unit there is a data line and power supply, for the projection screen there is a power supply.
- ⊕ Curtains work with smart system voice command.

iHomeBOX

energy efficiency



- ⊕ If it is intended to be supplied with a solar panel system, the infrastructure is suitable.
- ⊕ Installation of the product in the field is completed in only 40 minutes.
- ⊕ It can be relocated at any time and can be easily installed in another location.










The Tailor


iHomeBOX

THE TAILOR KONTEYNER TEKNOLOJİLERİ SANAYİ VE TİC. A.Ş.

 Pınarlı Mah. Aktepe Sok. No:2/1 Aksu / Antalya Türkiye

 0532 566 92 28 - 0533 924 91 99 - 0532 303 72 32

 Batı Mah., Sahil Bulvarı Marintürk Pendik Marina E Blok 6E/8-24 Pendik İstanbul

 0216 511 40 82 - 0505 537 83 77

 info@ihomebox.com.tr

 satis@ihomebox.com.tr

 teknik@ihomebox.com.tr

 www.ihomebox.com.tr

 /ihomeboxtr